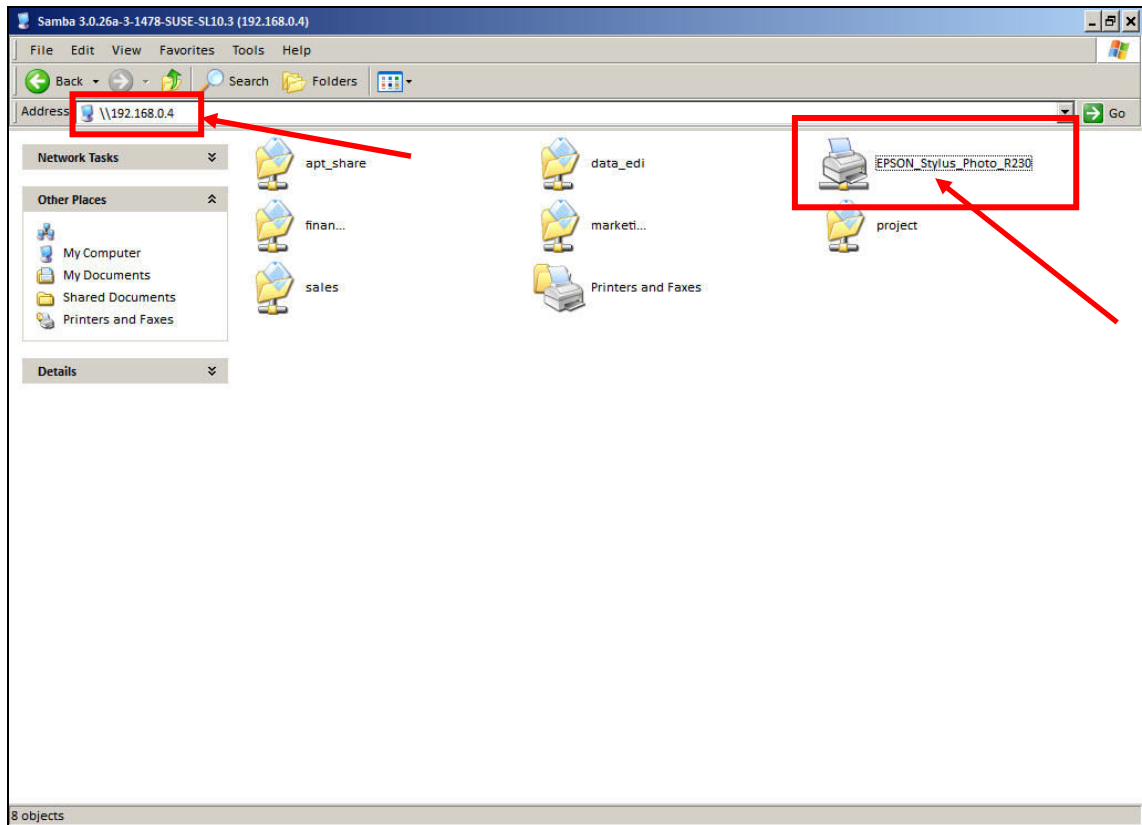


CONFIGURE WINDOWS CLIENT TO USE SAMBA SHARED PRINTER

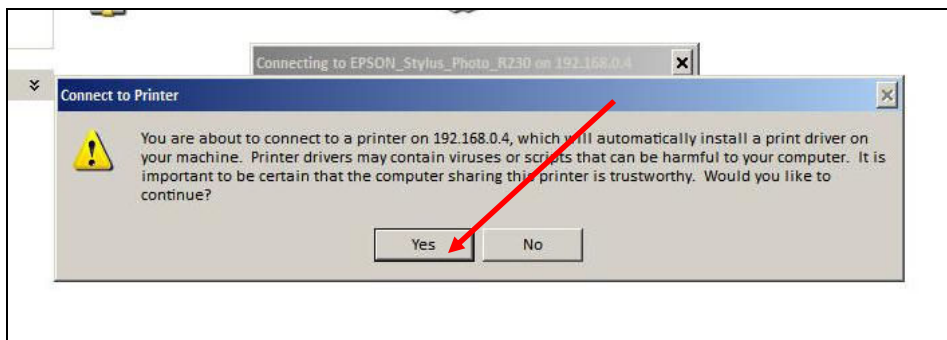
By : Tedy Tirtawidjaja

1. Open Samba server with type IP address of the server on the explorer. If server configuration was correct, you can see the network printer in the Samba directory.



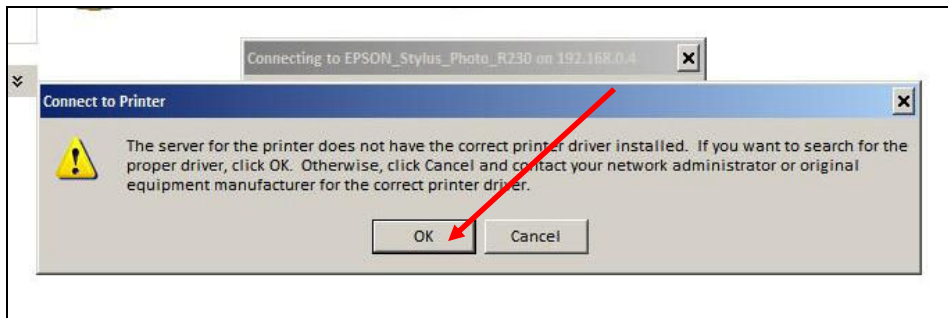
(see the right red arrow that point to the network printer).

2. Double click on the printer available (in this case it was Epson Stylus Photo R230). Windows will tell you that you need to install a driver for the printer. You will see the following warning window :



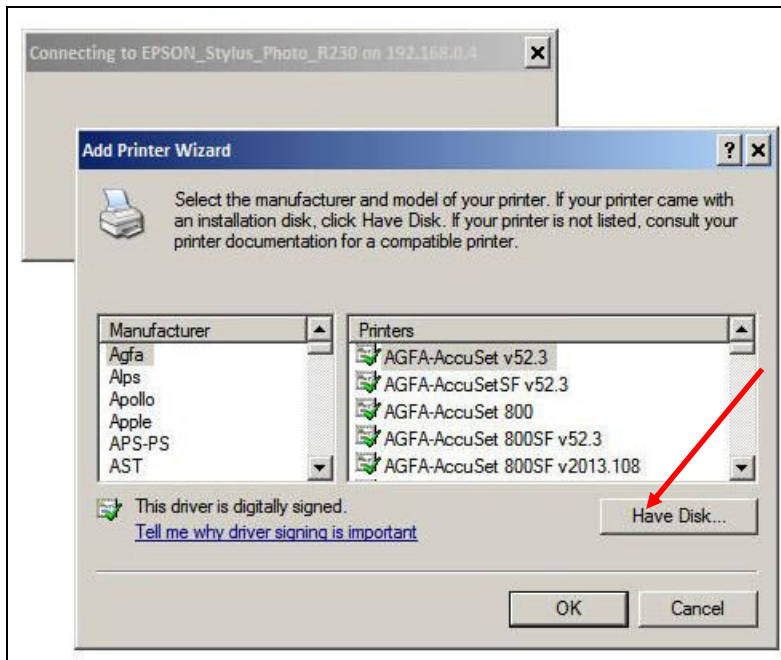
Just press **Yes** button to continue.

- Windows will inform you that there is no suitable driver on the library. The warning message will look like this picture :



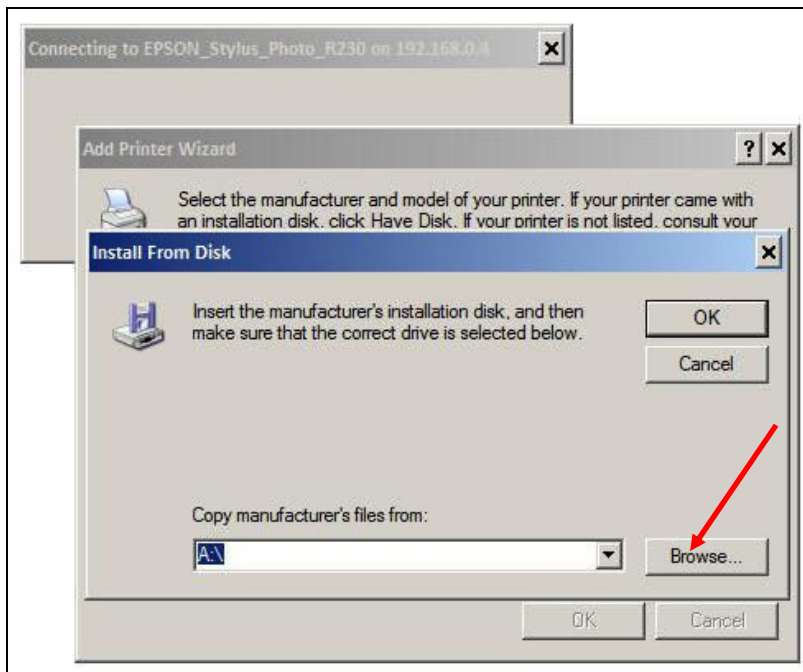
Press on the **OK** button to continue.

4. Windows will ask you to choose 1 on the several driver which available. In this example, there is no suitable driver for Epson Stylus Photo R230. See the following picture :



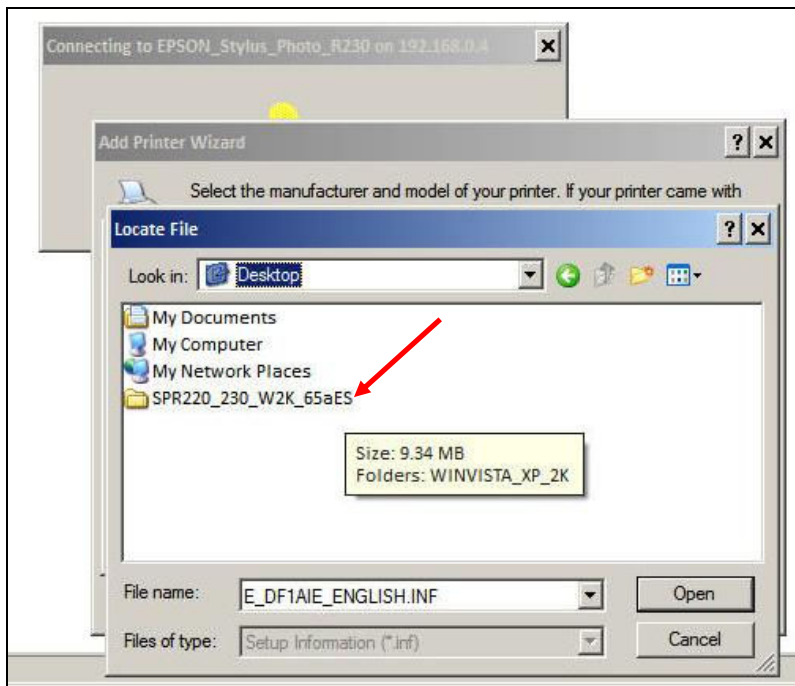
You must specify manually the driver by click on the **Have Disk** button.

5. You will get the window as in the picture below as soon as you click **Have Disk** button :



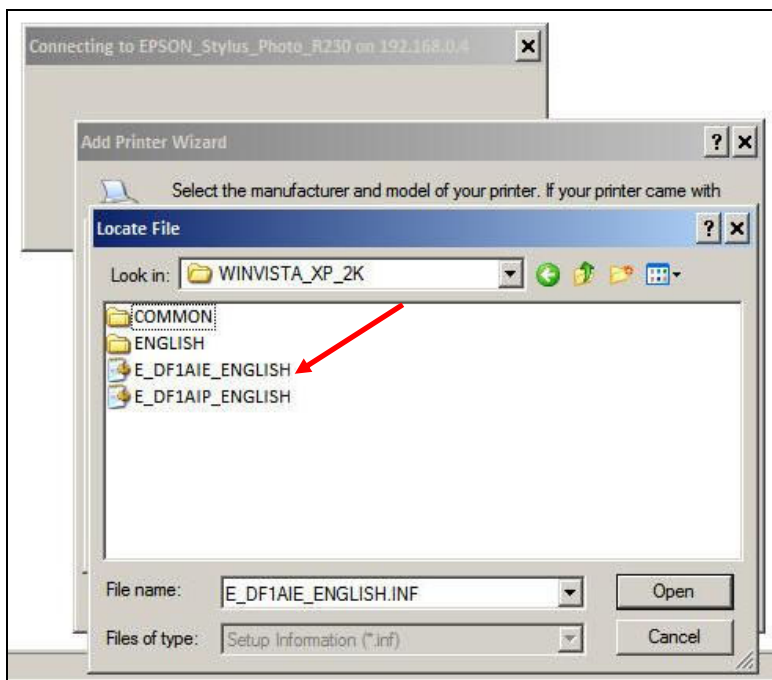
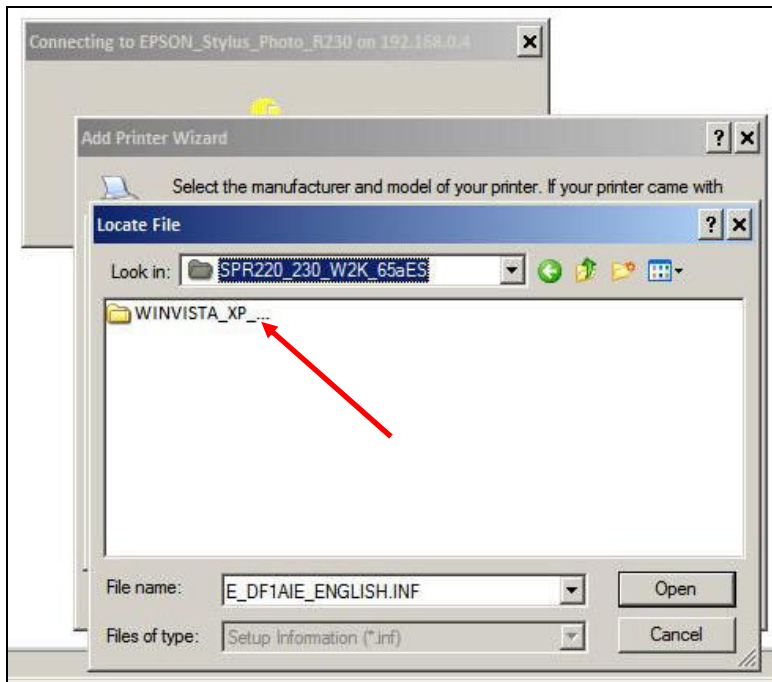
Click **Browse** button to tell Windows where you stored the driver.

6. The display that appears is like this picture :



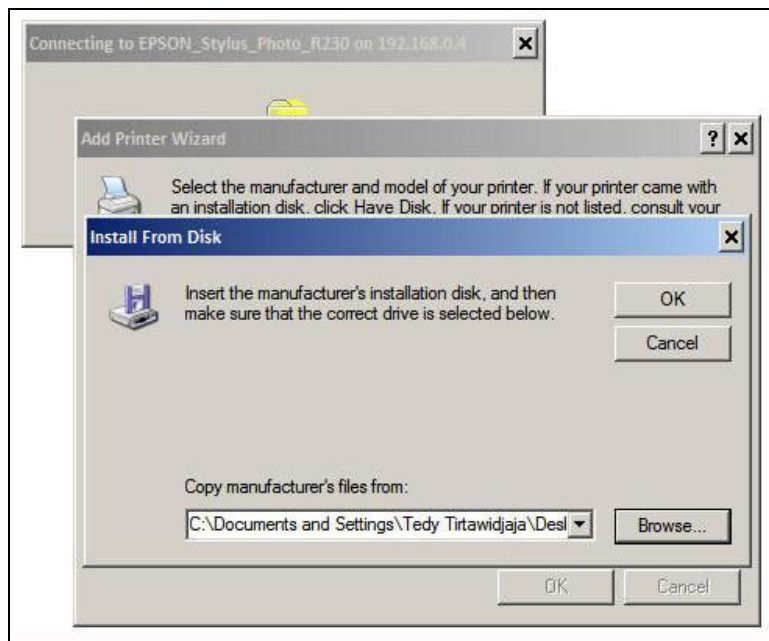
Search the driver, in this example the driver stored at Desktop. The folder that contains the driver is **SPR220_230_W2K_65aES**.

7. Enter to the folder **SPR220_230_W2K_65aES** and then into **WINVISTA_XP_2K**. See the following pictures:

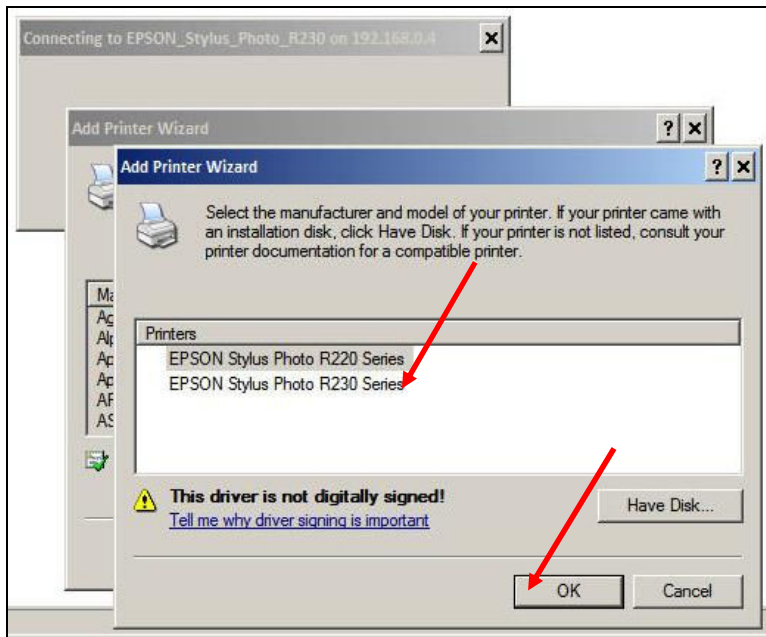


The driver is **E_DF1AIE_ENGLISH.inf**, click on the file and then click **Open**.

8. After choose the driver, click **OK** on the window. See the following example :



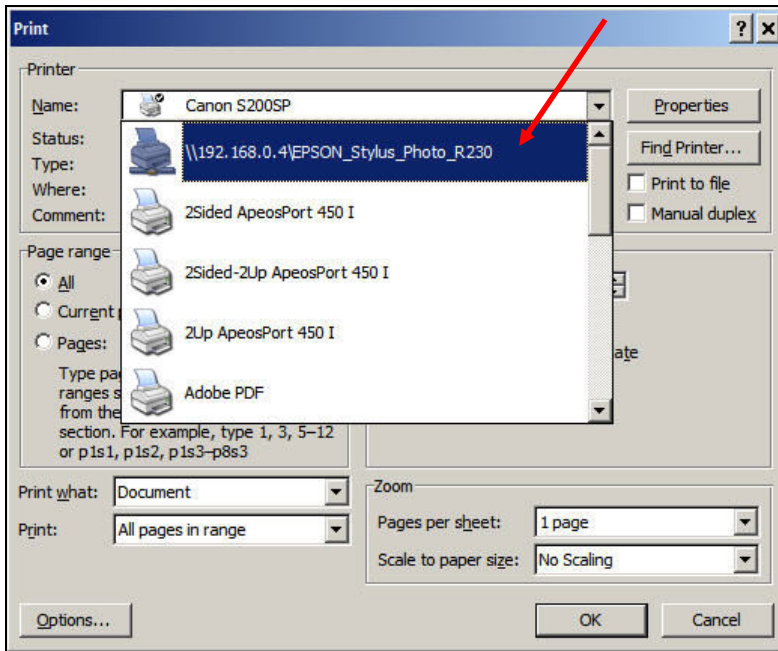
9. Windows will recognize the driver and tells you available driver in the file. Choose **EPSON Stylus Photo R230 Series** and then click **OK**.



Choose the driver and click **OK**.

10. Windows will install the driver for Epson Stylus Photo R230 printer. In the installation process you will see the warning message **“This driver is not digitally signed”**. Just ignore the message by click on the **“Continue anyway”** button.

Wait for the rest of the installation process. When the process finished, the network printer already available to use. See the following example :



In this example when I was printing using network printer, there is a monitoring window like this one:

